



REV. NO.	DATE	DESCRIPTION



**CB&I Environmental & Infrastructure, Inc.**  
TBPE FIRM F-5650

CB&I Environmental and Infrastructure, Inc. has prepared this document for a specific project or purpose. All information contained within this document is copyrighted and remains intellectual property of CB&I Environmental and Infrastructure, Inc. This document may not be used or copied, in part or in whole, for any reason without expressed written consent by CB&I Environmental and Infrastructure, Inc.



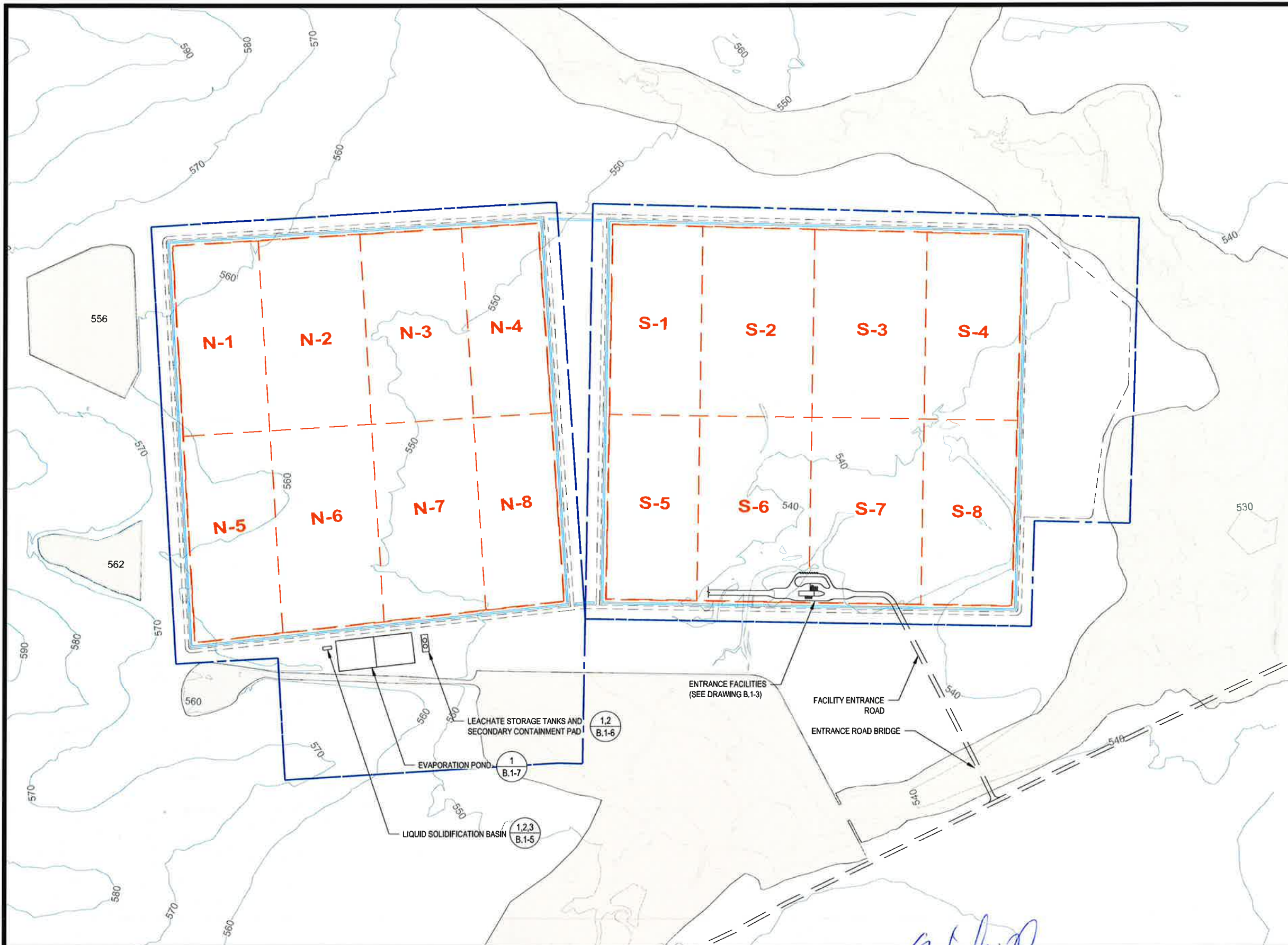
*Michael W. Oden*  
3-2-2015

THIS DOCUMENT IS RELEASED FOR THE PURPOSE OF PERMITTING UNDER THE AUTHORITY OF MICHAEL W. ODEN, P.E. 67165.

**PESCADITO ENVIRONMENTAL RESOURCE CENTER  
WEBB COUNTY, TEXAS  
MSW 2374**

**WASTE FLOW DIAGRAM**

PROJ. NO.:	148866	DATE:	MARCH 2015
DESIGNED BY:		DRAWING NO.	<b>III B.1-1</b>
DRAWN BY:	APD		
CHECKED BY:	RDS		
APPROVED BY:	MWO		1 OF 6 SHEETS



**LEGEND**

- PERMIT BOUNDARY
- WASTE UNIT BOUNDARY
- PERIMETER ACCESS ROAD
- PERIMETER STORMWATER DITCH
- CLOMR 100-YEAR FLOODPLAIN

**NOTES**

1. EXISTING CONTOURS DEVELOPED FROM SITE AERIAL TOPOGRAPHIC SURVEY BY DALLAS AERIAL SURVEYS ON FEBRUARY 15, 2010.
2. BOUNDARY AND IMPROVEMENT SURVEY DEVELOPED BY MEJIA ENGINEERING COMPANY ON AUGUST 15, 2011 AND JUNE 9, 2014.
3. FOR CLARITY, NOT ALL SITE FEATURES MAY BE SHOWN.
4. THE NEED FOR FLEXIBILITY TO ACCOMMODATE ADJUSTMENTS AND MODIFICATIONS IS ANTICIPATED CONSIDERING THE SIZE, COMPLEXITY, AND LIFE OF THE PROJECT..
5. FACILITIES WILL BE ADDED AS THE NEED DICTATES.

REV. NO.	DATE	DESCRIPTION

**CB&I Environmental & Infrastructure, Inc.**  
TBPE FIRM F-5650

CB&I Environmental and Infrastructure, Inc. has prepared this document for a specific project or purpose. All information contained within this document is copyrighted and remains intellectual property of CB&I Environmental and Infrastructure, Inc. This document may not be used or copied, in part or in whole, for any reason without expressed written consent by CB&I Environmental and Infrastructure, Inc.



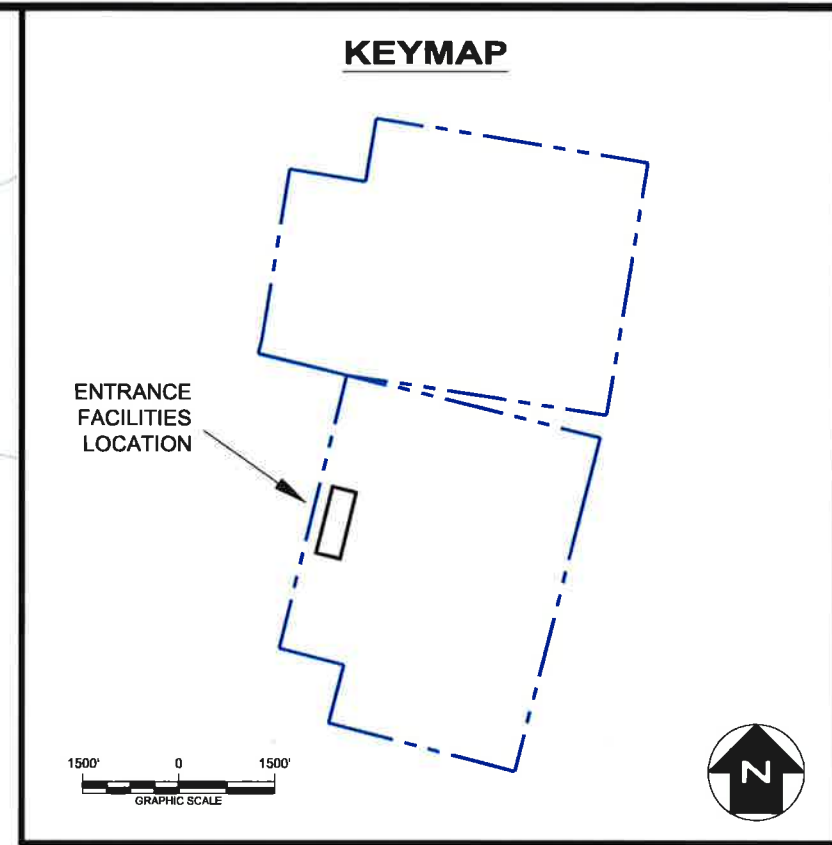
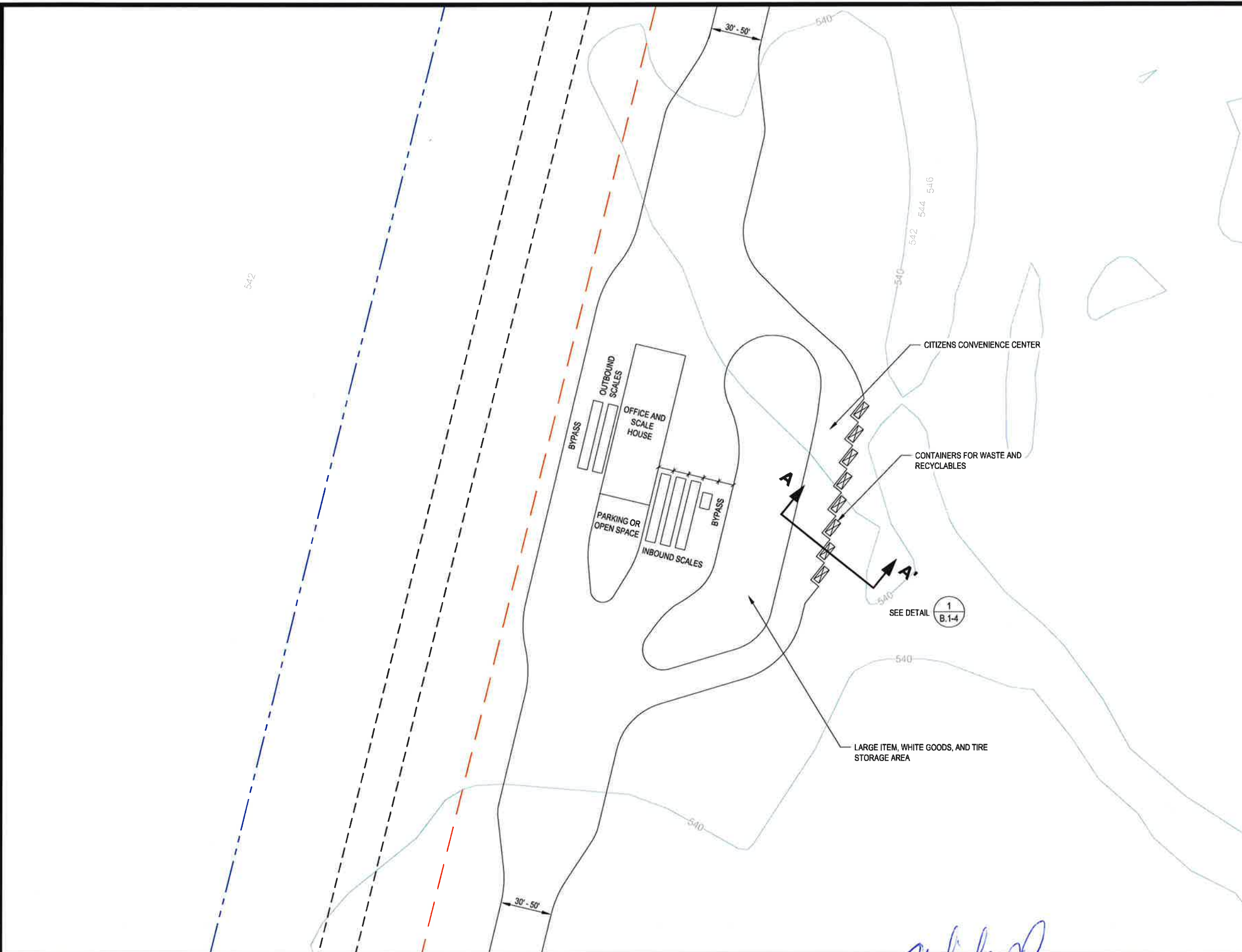
*Michael W. Oden*

THIS DOCUMENT IS RELEASED FOR THE PURPOSE OF PERMITTING UNDER THE AUTHORITY OF MICHAEL W. ODEN, P.E. 67165.  
3-2-2015

**PESCADITO ENVIRONMENTAL RESOURCE CENTER  
WEBB COUNTY, TEXAS  
MSW 2374**

**WASTE DISPOSAL, PROCESSING, AND STORAGE PLAN**

PROJ. NO.: 148866	DATE: MARCH 2015
DESIGNED BY: -	DRAWING NO. III
DRAWN BY: MTE	<b>B.1-2</b>
CHECKED BY: RDS	2 OF 6 SHEETS
APPROVED BY: MWO	

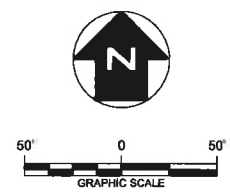


**LEGEND**

- APPROXIMATE FACILITY BOUNDARY
- APPROXIMATE EXISTING WASTE BOUNDARY
- PERIMETER ROAD

**NOTES**

1. EXISTING CONTOURS DEVELOPED FROM SITE AERIAL TOPOGRAPHIC SURVEY BY DALLAS AERIAL SURVEYS ON FEBRUARY 15, 2010.
2. FOR CLARITY, NOT ALL SITE FEATURES MAY BE SHOWN.
3. ACTUAL DIMENSIONS, NUMBER OF SCALES, AND NUMBER OF CONTAINERS MAY CHANGE DEPENDING ON AMOUNT OF MATERIAL RECEIVED.



REV. NO.	DATE	DESCRIPTION

**CBI** CB&I Environmental & Infrastructure, Inc.  
 TBPE FIRM F-5650

CB&I Environmental and Infrastructure, Inc. has prepared this document for a specific project or purpose. All information contained within this document is copyrighted and remains the intellectual property of CB&I Environmental and Infrastructure, Inc. This document may not be used or copied, in part or in whole, for any reason without expressed written consent by CB&I Environmental and Infrastructure, Inc.



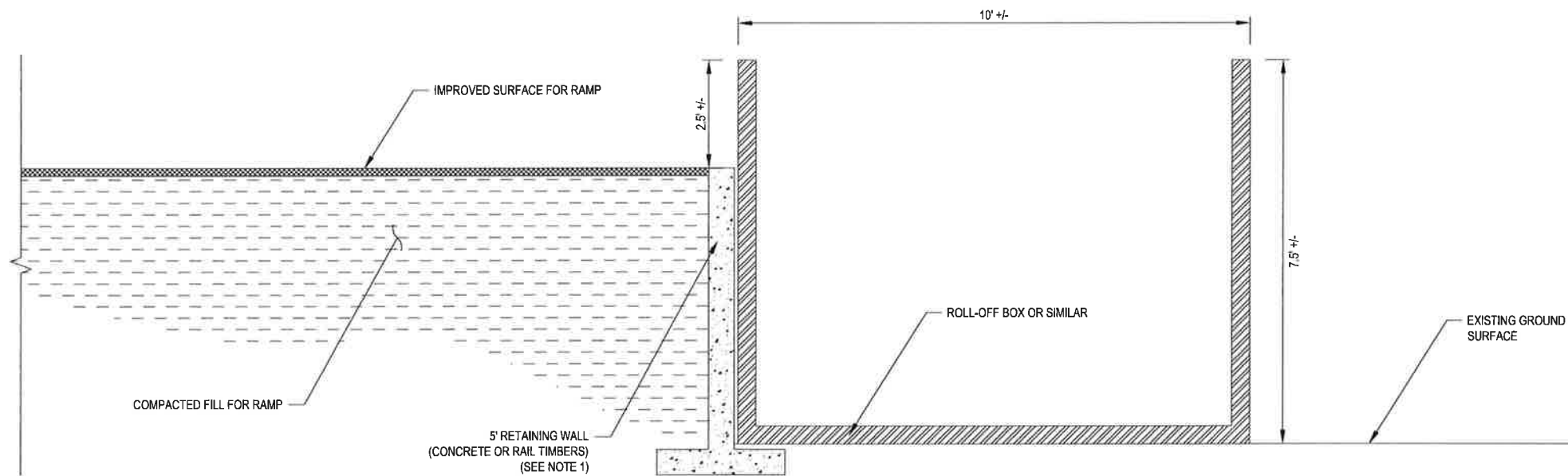
*Michael W. Oden*

THIS DOCUMENT IS RELEASED FOR THE PURPOSE OF PERMITTING UNDER THE AUTHORITY OF MICHAEL W. ODEN, P.E. 67165  
 3-2-2015

**PESCADITO ENVIRONMENTAL RESOURCE CENTER  
 WEBB COUNTY, TEXAS  
 MSW 2374**

**ENTRANCE FACILITIES**

PROJ. NO.:	148866	DATE:	MARCH 2015
DESIGNED BY:	-	DRAWING NO.:	III <b>B.1-3</b>
DRAWN BY:	APD		
CHECKED BY:	RDS		
APPROVED BY:	MWO		3 OF 6 SHEETS



1  
B.1-4

SECTION A-A'

NOT TO SCALE

**NOTES**

- CONTAINERS MAY BE INITIALLY SET ON EXISTING GROUND WITH NO RETAINING WALL OR COMPACTED FILL RAMP DEPENDING ON USE AND CONVENIENCE TO CUSTOMERS.

REV. NO.	DATE	DESCRIPTION



**CB&I Environmental & Infrastructure, Inc.**  
TBPE FIRM F-5650

CB&I Environmental and Infrastructure, Inc. has prepared this document for a specific project or purpose. All information contained within this document is copyrighted and remains intellectual property of CB&I Environmental and Infrastructure, Inc. This document may not be used or copied, in part or in whole, for any reason without expressed written consent by CB&I Environmental and Infrastructure, Inc.

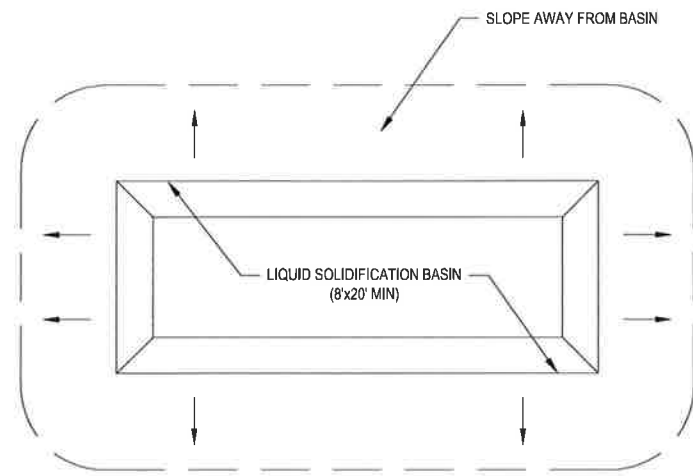


*Michael W. Oden*  
THIS DOCUMENT IS RELEASED FOR THE PURPOSE OF PERMITTING UNDER THE AUTHORITY OF MICHAEL W. ODEN, P.E. 67165.  
3-2-2015

**PESCADITO ENVIRONMENTAL RESOURCE CENTER  
WEBB COUNTY, TEXAS  
MSW 2374**

**CONVENIENCE CENTER DETAILS**

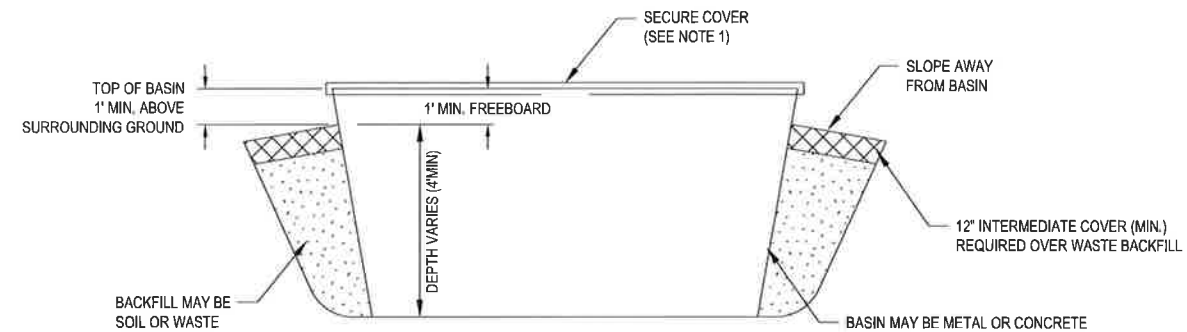
PROJ. NO.: 148866	DATE: MARCH 2015
DESIGNED BY: --	DRAWING NO. III
DRAWN BY: MTE	<b>B.1-4</b>
CHECKED BY: RDS	4 OF 6 SHEETS
APPROVED BY: MWO	



**1**  
**B.1-5** **LIQUID SOLIDIFICATION BASIN PLAN VIEW**  
NOT TO SCALE

**NOTE:**

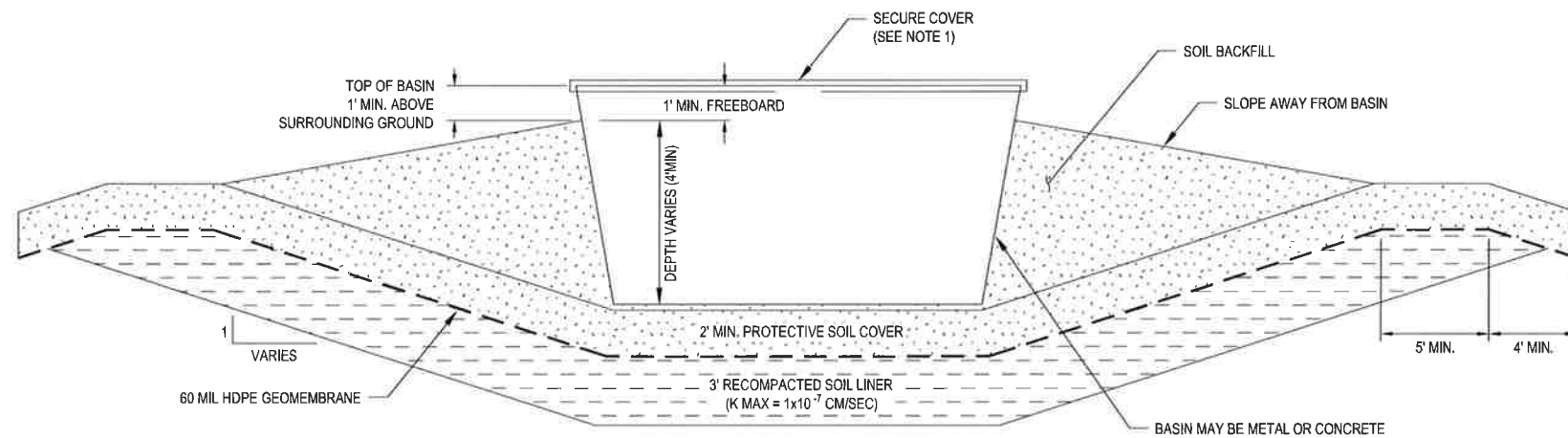
1. STORMWATER TO BE DIRECTED AWAY FROM BASIN
2. THIS PLAN IS CONCEPTUAL. ACTUAL DIMENSIONS OF THE BASIN WILL VARY.



**2**  
**B.1-5** **TYPICAL CROSS SECTION BASIN LOCATED OVER LINED CELL**  
NOT TO SCALE

**NOTE:**

1. A SECURE COVER WILL BE PLACED OVER THE CONTAINER ANY TIME PROCESSED OR UNPROCESSED WASTE REMAINS IN THE CONTAINER OVERNIGHT
2. THIS SECTION IS CONCEPTUAL. ACTUAL DIMENSIONS OF THE BASIN WILL VARY. THE NUMBER OF BASINS WILL VARY DEPENDING ON WASTE RECEIPTS.
3. THIS BASIN CONFIGURATION MAY ONLY BE PLACED IN EXISTING WASTE OVER THE EXISTING COMPOSITE LINED CELLS



**3**  
**B.1-5** **TYPICAL CROSS SECTION BASIN LOCATED OUTSIDE OF WASTE CELL**  
NOT TO SCALE

**NOTE:**

1. A SECURE COVER WILL BE PLACED OVER THE CONTAINER ANY TIME PROCESSED OR UNPROCESSED WASTE REMAINS IN THE CONTAINER OVERNIGHT
2. THIS SECTION IS CONCEPTUAL. ACTUAL DIMENSIONS OF THE BASIN WILL VARY. THE BASIN SHALL BE AT A MINIMUM: 8 FEET WIDE, 20 FEET LONG, AND 5 FEET DEEP (4 FEET PLUS 1 FOOT FREEBOARD). THE NUMBER OF BASINS WILL VARY DEPENDING ON WASTE RECEIPTS.
3. 2' OR 3' RECOMPACTED SOIL LINER AND 60 MIL HDPE GEOCOMPOSITE LINER AND 2' SOIL PROTECTIVE COVER TO BE CONSTRUCTED IN ACCORDANCE WITH APPENDIX III-D.7 (LINER QUALITY CONTROL PLAN)
4. THIS BASIN CONFIGURATION AND CONSTRUCTION WILL BE UTILIZED OUTSIDE OF EXISTING WASTE BUT WITHIN PERMIT BOUNDARY.
5. MULTIPLE UNITS MAY BE USED DEPENDING ON AMOUNT OF INCOMING WASTE.
6. UNITS WILL ONLY BE CONSTRUCTED AS NEED DICTATES.

REV. NO.	DATE	DESCRIPTION



CB&I Environmental and Infrastructure, Inc. has prepared this document for a specific project or purpose. All information contained within this document is copyrighted and remains intellectual property of CB&I Environmental and Infrastructure, Inc. This document may not be used or copied, in part or in whole, for any reason without expressed written consent by CB&I Environmental and Infrastructure, Inc.

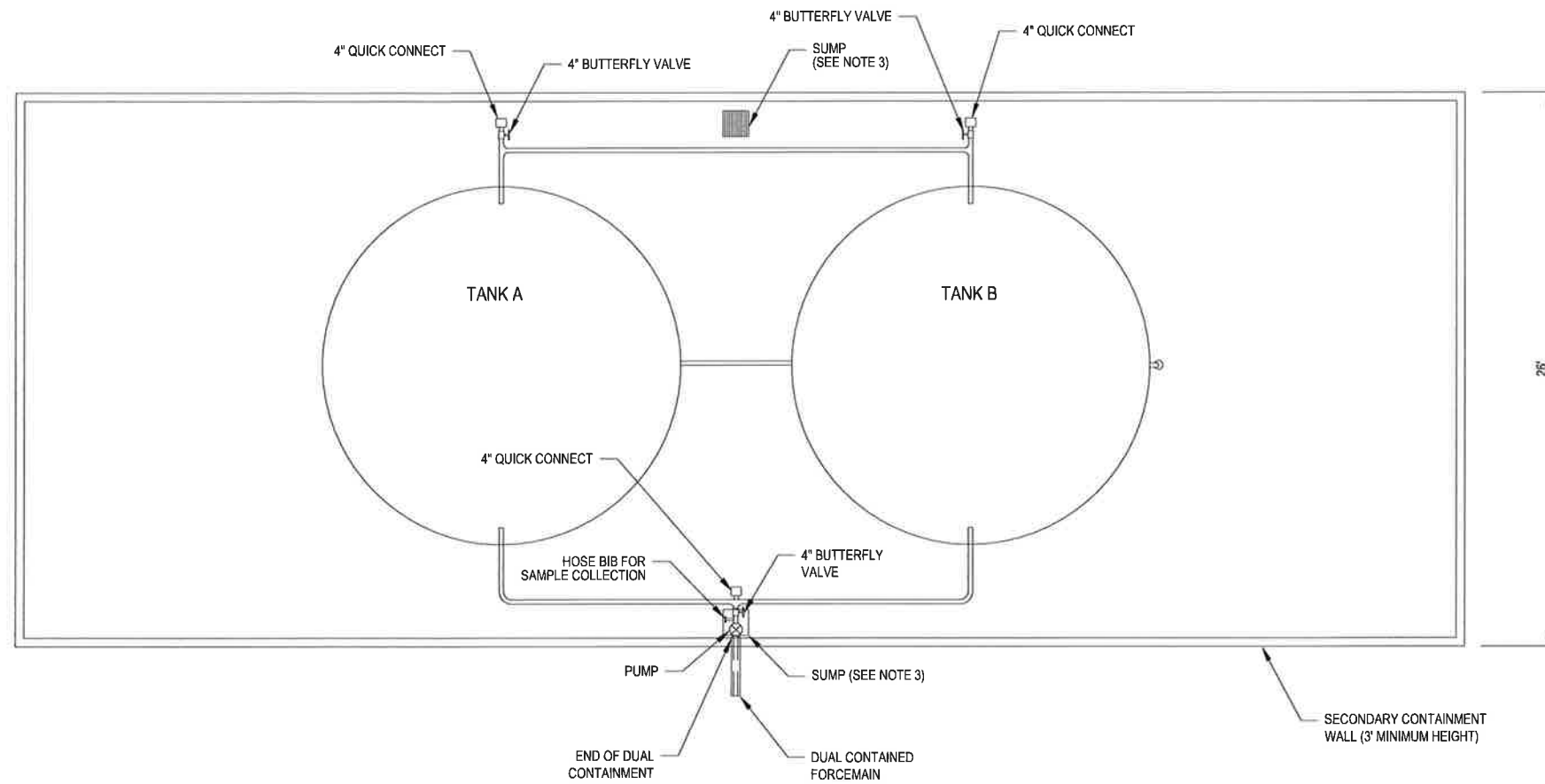


*Michael W. Oden*  
THIS DOCUMENT IS RELEASED FOR THE PURPOSE OF PERMITTING UNDER THE AUTHORITY OF MICHAEL W. ODEN, P.E. 67165.  
*3-2-2015*

**PESCADITO ENVIRONMENTAL RESOURCE CENTER  
WEBB COUNTY, TEXAS  
MSW 2374**

**LIQUID SOLIDIFICATION BASIN PLAN AND DETAILS**

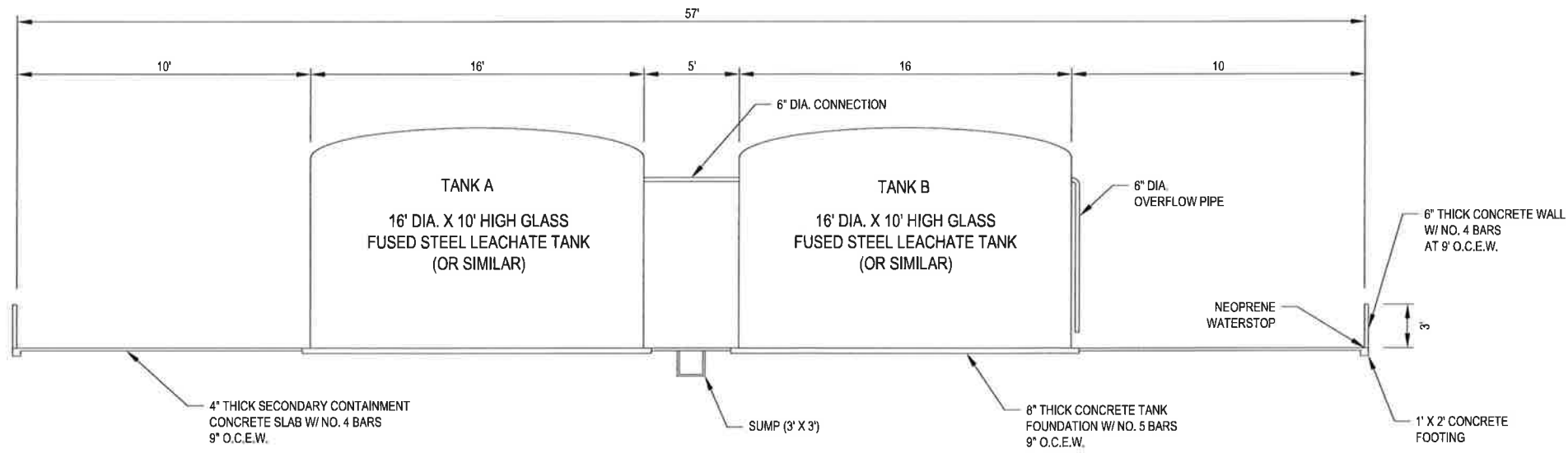
PROJ. NO.: 148866	DATE: MARCH 2015
DESIGNED BY: —	DRAWING NO. III
DRAWN BY: MTE	<b>B.1-5</b>
CHECKED BY: RDS	5 OF 6 SHEETS
APPROVED BY: MWO	



**1**  
D.3-9  
**LEACHATE STORAGE TANK FACILITY PLAN**  
NOT TO SCALE

NOTES:

1. REFER TO APPENDIX III-D.6 FOR DISCUSSION ON THE LEACHATE STORAGE FACILITY.
2. REFER TO APPENDIX III-D.6 FOR THE SECONDARY CONTAINMENT VOLUME CALCULATIONS FOR THE LEACHATE STORAGE FACILITY.
3. SUMPS ARE 3' WIDE AND 3' DEEP.
4. CONCRETE SECTIONS MAY VARY PENDING FINAL TANK SELECTION, SIZE, AND DESIGN.



**2**  
D.3-9  
**LEACHATE STORAGE TANK FACILITY SECTION**  
NOT TO SCALE

REV. NO.	DATE	DESCRIPTION

**CBI**  
CB&I Environmental & Infrastructure, Inc.  
TYPE FIRM F-5650

CB&I Environmental and Infrastructure, Inc. has prepared this document for a specific project or purpose. All information contained within this document is copyrighted and remains intellectual property of CB&I Environmental and Infrastructure, Inc. This document may not be used or copied, in part or in whole, for any reason without expressed written consent by CB&I Environmental and Infrastructure, Inc.

*Michael W. Oden*

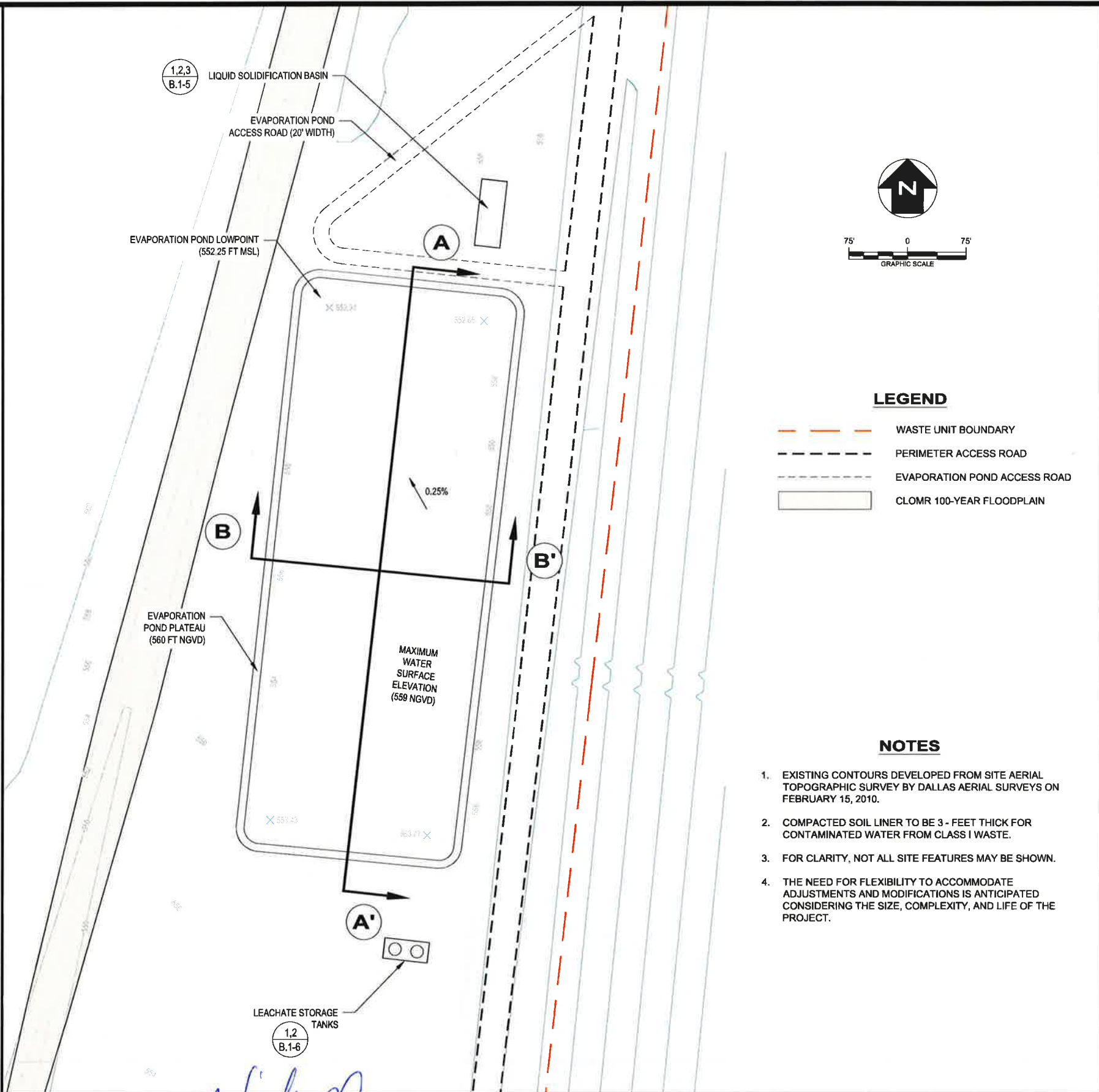
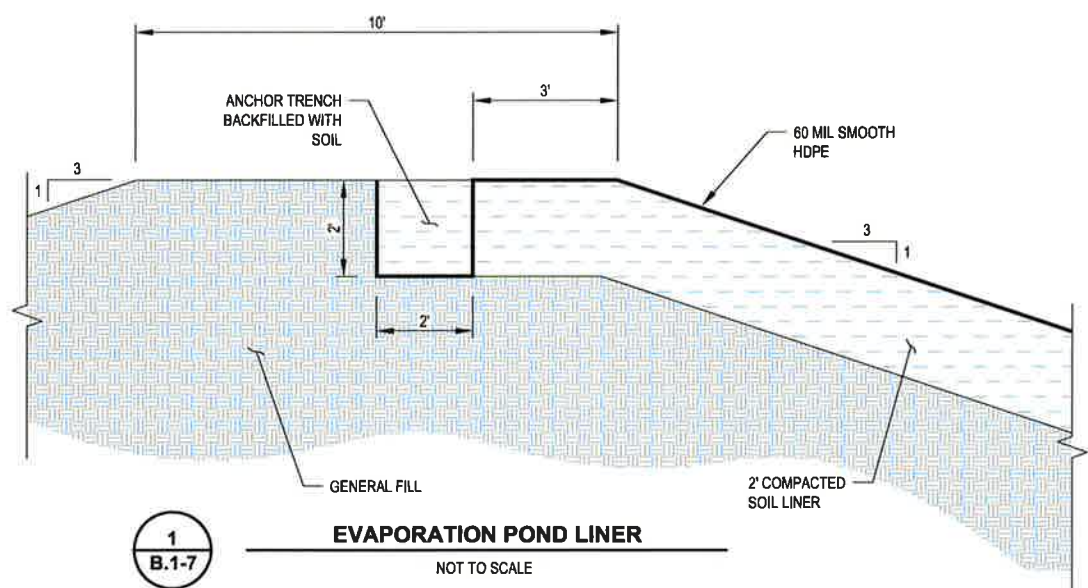
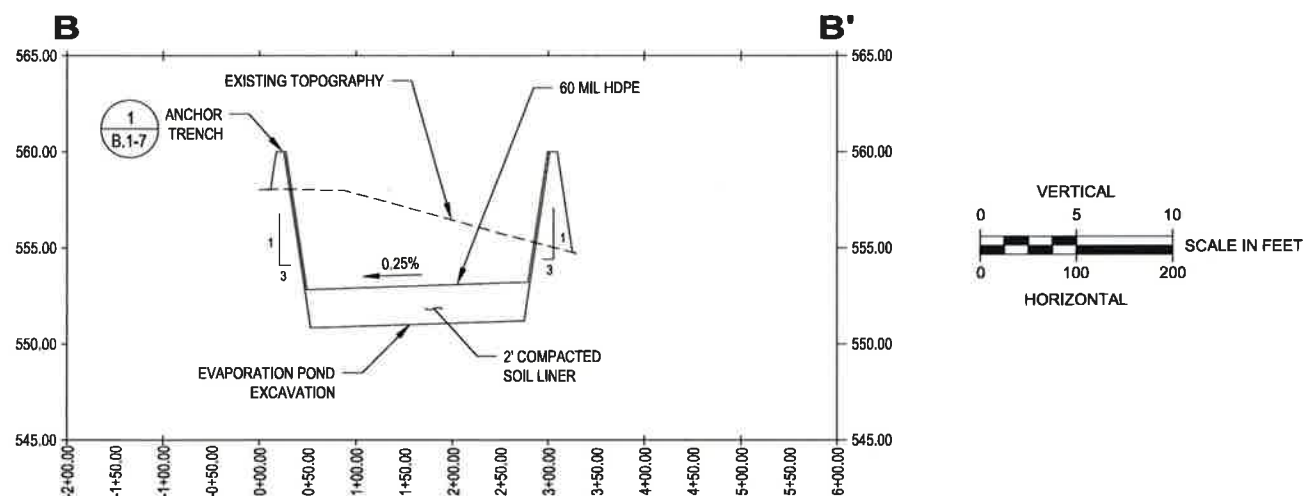
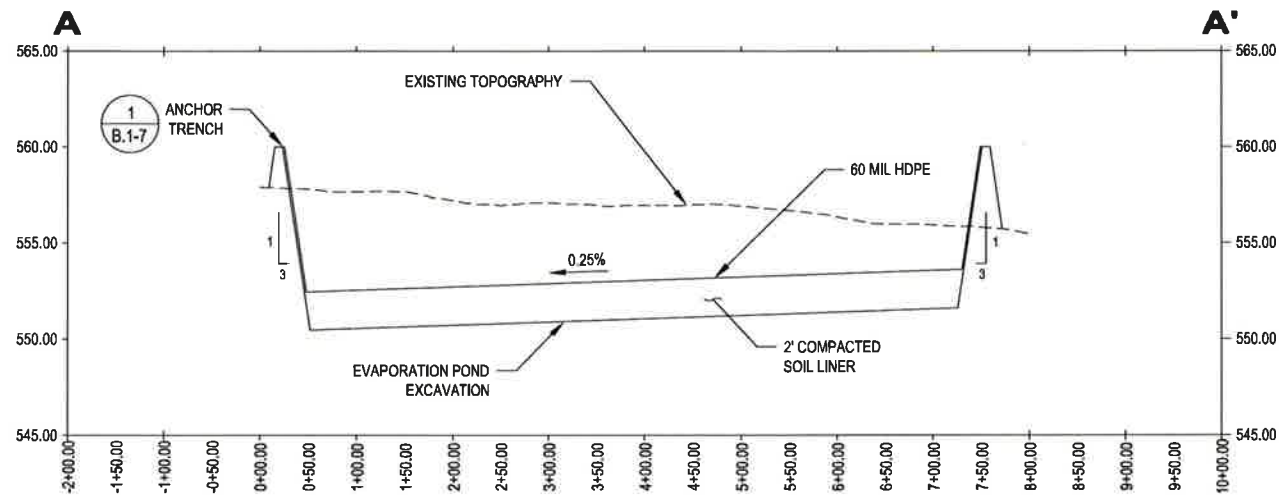
STATE OF TEXAS  
MICHAEL W. ODEN  
67165  
REGISTERED PROFESSIONAL ENGINEER

THIS DOCUMENT IS RELEASED FOR THE PURPOSE OF PERMITTING UNDER THE AUTHORITY OF MICHAEL W. ODEN, P.E. 67165.  
3-2-2015

**PESCADITO ENVIRONMENTAL RESOURCE CENTER  
WEBB COUNTY, TEXAS  
MSW 2374**

**LEACHATE STORAGE DETAILS**

PROJ. NO.:	148866	DATE:	MARCH 2015
DESIGNED BY:	-	DRAWING NO.:	III <b>B.1-6</b>
DRAWN BY:	APD		
CHECKED BY:	RDS		
APPROVED BY:	MWO		6 OF 6 SHEETS



- LEGEND**
- WASTE UNIT BOUNDARY
  - PERIMETER ACCESS ROAD
  - EVAPORATION POND ACCESS ROAD
  - CLOMR 100-YEAR FLOODPLAIN

- NOTES**
1. EXISTING CONTOURS DEVELOPED FROM SITE AERIAL TOPOGRAPHIC SURVEY BY DALLAS AERIAL SURVEYS ON FEBRUARY 15, 2010.
  2. COMPACTED SOIL LINER TO BE 3- FEET THICK FOR CONTAMINATED WATER FROM CLASS I WASTE.
  3. FOR CLARITY, NOT ALL SITE FEATURES MAY BE SHOWN.
  4. THE NEED FOR FLEXIBILITY TO ACCOMMODATE ADJUSTMENTS AND MODIFICATIONS IS ANTICIPATED CONSIDERING THE SIZE, COMPLEXITY, AND LIFE OF THE PROJECT.

REV. NO.	DATE	DESCRIPTION

**CBI** CB&I Environmental & Infrastructure, Inc.  
 TBPE FIRM F-5650  
CB&I Environmental and Infrastructure, Inc. has prepared this document for a specific project or purpose. All information contained within this document is copyrighted and remains intellectual property of CB&I Environmental and Infrastructure, Inc. This document may not be used or copied, in part or in whole, for any reason without expressed written consent by CB&I Environmental and Infrastructure, Inc.

STATE OF TEXAS  
 MICHAEL W. ODEN  
 67185  
 REGISTERED PROFESSIONAL ENGINEER  
 3-2-2015

**PESCADITO ENVIRONMENTAL RESOURCE CENTER  
 WEBB COUNTY, TEXAS  
 MSW 2374**

**EVAPORATION POND PLAN, PROFILES, AND DETAILS**

PROJ. NO.:	148866	DATE:	MARCH 2015
DESIGNED BY:	-	DRAWING NO.:	III <b>B.1-7</b>
DRAWN BY:	MTE		
CHECKED BY:	RDS		
APPROVED BY:	MWO		7 OF 7 SHEETS